

## SafePlace is...

a service for survivors of sexual assault and domestic violence to receive support, advocacy, and resources. All of our services are confidential, voluntary, and discrimination-free.



Additionally, all services are free of cost and can be offered in multiple languages. SafePlace is dedicated to providing quality services to all survivors of sexual assault and domestic violence, including those in the LGBTQ communities.

## A SafePlace advocate can help you...

- find emergency shelter
- access therapy
- join a support group
- go with you to the hospital for a Sexual Assault Nurse Exam
- get a legal protection order
- get free legal advice from an attorney
- provide you a safe space to share your story and process feelings
- create a safety plan for your situation
- connect with other community resources and more...

## Connect with us!

Our HelpLine runs 24 hours a day, 7 days a week. Call us!

**360-754-6300**  
**TTY 711**

Our Community Services Center is located at:

521 Legion Way SE  
Olympia, WA 98501  
Monday-Thursday  
9am-12pm and 1pm-5pm

Business Phone: 360-786-8754  
[www.safeplaceolympia.org](http://www.safeplaceolympia.org)



LGBTQ  
COMMUNITIES  
& SEXUAL  
VIOLENCE

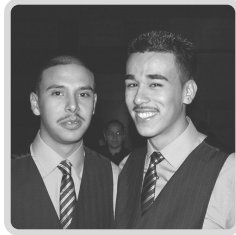
information, resources, and  
experiences of LGBTQ survivors

# HEALING IS POSSIBLE

WE ARE HERE TO SUPPORT YOU

## WHAT IS SEXUAL VIOLENCE?

Sexual violence is any sexual act forced upon an individual against their will and explicit consent. This can include but is not limited to rape, sexual harassment, childhood sexual abuse, "revenge porn," prison rape, groping, and verbal sexual abuse. Despite popular belief, it is most common to experience sexual violence by an intimate partner or someone familiar rather than a stranger.



## WHAT IS CONSENT?

Consent is freely and affirmatively communicated willingness to participate in sexual activity, expressed by clear, unambiguous words or actions. A partner can communicate that they no longer consent to continuing any sexual activity at any time. Consent may never be obtained through the use of force, coercion, or intimidation or if the person is mentally or physically incapacitated—including through the use of drugs or alcohol. Consent may not be assumed because of the existence of a previous dating or sexual relationship.

## HOW DOES SEXUAL VIOLENCE AFFECT LGBTQ COMMUNITIES?

Statistically, LGBTQ communities experience higher rates of sexual violence than those who do not identify as LGBTQ. According to the CDC (2010) and the National LGBTQ Task Force (2011):



- 64% of transgender individuals report experiencing sexual assault
- 46% of bisexual women report experiencing rape
- 40% of gay men and 47% of bisexual men report experiencing sexual violence other than rape
- 44% of lesbian women report experiencing rape, physical violence, or stalking by an intimate partner

## IN ADDITION...

LGBTQ survivors of sexual violence may have also experienced sexual violence as a form of hate crime or punishment for their identity.

LGBTQ people of color face even higher rates of sexual violence, especially by police forces, immigration detention centers, healthcare providers, and prisons/jails.

## LGBTQ SURVIVORS OFTEN FACE BARRIERS SUCH AS...

- Not being taken seriously or having their experience minimized
- Not having their experience named as sexual assault or rape
- Having to explain their experience in more detail than one would ask a cisgender heterosexual survivor or a survivor of male-female assault
- Having to educate those they reach out to
- Having their experience sensationalized
- Increasing people's homo/transphobia or being seen as a traitor in their community because they told their story to non-LGBTQ people or are upholding stereotypes about LGBTQ people
- Mistakenly being seen as the perpetrator
- Being blamed for the assault, often "as a result of" their identity
- Being treated in a homo/transphobic manner by police, hospital staff, rape crisis center, counselors and others.
- Being "outed" (having their identity revealed without their consent)

*Other issues affecting LGBTQ folk also increase their vulnerability for violence, such as homelessness, lack of accessible and safe health care, hostile "home" environments, and financial instability.*