

08 Board of Directors

Sunshine Bradshaw
Diane Bren
Jason Cain
Julia Curtis,
President
Lori Hart
Mike Hart
Arlene Hartman,
Secretary

Grace Kendall
Carolyn Lakewold
Chris Meehan,
Treasurer
Dick Platner
Nikkie Thompson,
Treasurer
Sue Zukowski,
Vice President



SafePlace staff & volunteers, Sept 2008

Future Plans

At SafePlace we have chosen to consider our country's economic downturn as a creative fundraising challenge. SafePlace continues to provide excellent services to survivors of domestic and sexual violence, even in the midst of difficult times.

We will not shrink from the need, but rise to the call for help. Our future will include expanding our Community Service program in the next year, to better serve those who walk in for advocacy appointments, come to our domestic violence or sexual assault victim support groups, utilize our legal clinic or are in need of an advocate's presence during a sexual assault medical exam.

SafePlace



freedom from violence



2008 Report to the Community

Mission: We strive to put an end to sexual and domestic violence and advocate for personal and societal change through crisis intervention and education.

Because violence affects us all... 08 Financials

Highlights:

In 2008, SafePlace provided:

- **5,295 hours** of domestic violence and sexual assault advocacy—equivalent to **220 days** worth of time!
- **268** people received shelter, **129** of whom were under the age of 17
- **210** people attended an English or Spanish-speaking support group
- **48** people received sexual assault medical advocacy
- **344** people attended the legal clinic
- **2,035** calls to the crisis line were answered



Reading in our children's play room



Answering crisis calls 24 hours a day

2008 Statement of Financial Position

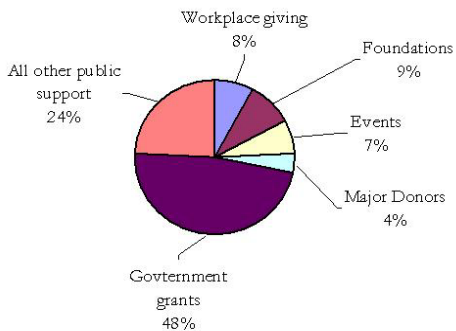
Assets	
Total Current Assets	\$255,187
Property, build. & equip.	\$2,108,000
Less depreciation	(\$201,731)
Total Property, Build, Equip.	\$1,906,269
Total Other Assets	\$264,807
Total Assets	\$2,426,263
Liabilities and Net Assets	
Current liabilities	\$107,839
Long-term liabilities	\$321,625
Total Liabilities	\$429,464
Net Assets	
Total Net Assets	\$1,996,799
Total Liabilities & Net Assets	\$2,426,263

Statement of Activities

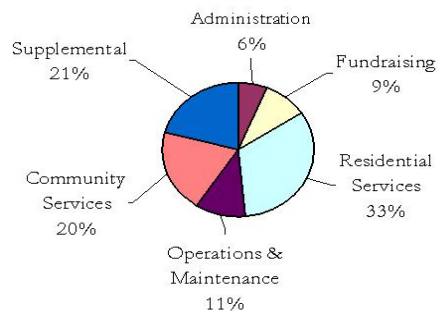
Support and Revenue	
Public Support	
Contributions	\$439,411
Events	\$30,883
Donated property, goods/services	\$23,742
Total Public Support	\$494,036
Total Government Grants	\$550,996
Total Investment Income	\$12,120
Total Support and Revenue	\$1,057,152
Expenses	
Total Program Services	\$1,016,036
Support Services	
Management and general	\$76,716
Fundraising	\$108,709
Total Support Services	\$185,425
Total Expenses	\$1,201,461
Change in Net Assets from Operating	(\$144,309)
Nonoperating Revenue	\$70,792
Change in Net Assets	(\$73,517)
Net assets at beginning of year	\$2,070,316
Net Assets at End of Year	\$1,996,799

“SafePlace is a place to bring people from pieces to peace”

2008 Revenue



2008 Expenses



Alejandro shares community resources on his bilingual radio show featured on KAOS 89.3

“I now know that I am a worthwhile woman who can grow and be productive without being abused. I feel wonderful and hopeful. I know I have a future as somebody.”